

# Sabroe CMO reciprocating compressor units

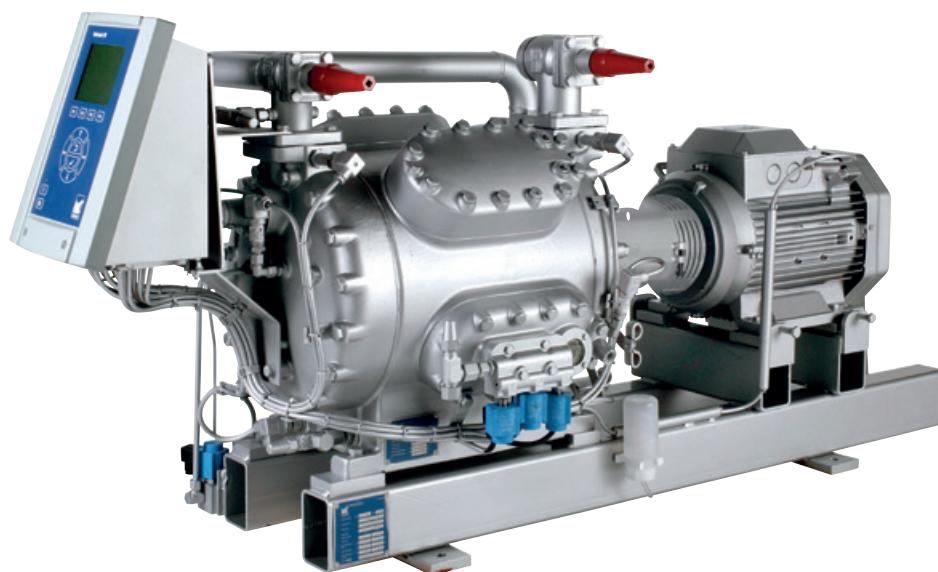
Small single-stage compressors with swept volumes of 100–270 m<sup>3</sup>/h

CMO compressor units are small units specially designed for use in smaller-scale refrigeration installations where reliability is a particular concern, and uninterrupted service a big priority.

They are an economical, low-maintenance solution for smaller-scale, heavy-duty refrigeration installations, and are most commonly used as stand-alone units operating at full load, or as small back-up compressors.

## Range

Six different models are available to provide swept volumes of between 97 and 273 m<sup>3</sup>/h.



CMO 24 reciprocating compressor unit with Unisab III systems controller

### Advantages

High coefficient of performance (COP), with excellent performance even under part-load conditions

Special design ensures low noise and vibration

Variable-speed drive (optional) provides stepless capacity control over the entire operating range

Repairs can be undertaken *in situ*, without removing the compressor

Easy to access for service, with limited spare parts requirements

### Benefits

Low power consumption, which greatly reduces operating costs

Wider range of possible mounting locations, and minimal expenditure on noise attenuation systems

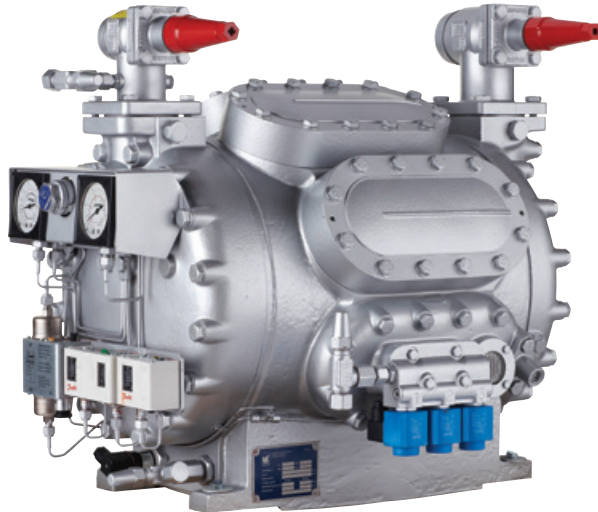
Power consumption and operating costs kept to a minimum

Lower repair costs and less downtime

Easy, inexpensive maintenance, which helps limit downtime and reduce operating costs

## Options

- Unisab III systems controller
- Variable-speed drive line (Unisab always included)
- Gauges, thermometers and temperature/pressure control switches
- Extended cylinder capacity control
- Oil level regulator (for use in parallel systems)
- ATEX-compliant configuration
- Oil separators with coalescing element
- Special vibration dampening.



CMO 28 reciprocating compressor block with gauges

Model	Number of cylinders	Swept volume at 1500 rpm m <sup>3</sup> /h	Swept volume at 1800 rpm m <sup>3</sup> /h	Nominal capacities in kW at 1500 rpm					Dimensions in mm Direct coupled unit			Weight excluding motor kg	Sound pressure level at 1500 rpm dB(A)
				R717		Booster -40/-10°C	R404A		L	W	H		
				Single/high stage -10/+35°C	0/+35°C		Single/high stage 0/+35°C	-10/+35°C					
CMO 24	4	97	116	53	85	14	85	54	1400-2150	800	900	480	69
<b>CMO 26</b>	<b>6</b>	<b>146</b>	<b>175</b>	79	127	21	<b>127</b>	81	<b>1450-2175</b>	<b>800</b>	<b>900</b>	<b>520</b>	<b>71</b>
CMO 28	8	194	233	105	170	28	169	108	1475-2200	800	900	550	72
CMO 34	4	113	136	62	100	17	99	63	1400-2150	800	900	480	70
CMO 36	6	170	204	93	149	25	149	95	1450-2175	800	900	520	72
CMO 38	8	228	273	123	199	33	198	127	1475-2200	800	900	550	73

Nominal capacities are based on 1500 rpm and 5K liquid subcooling.  
 All refrigerants make it possible to operate CMO compressors at speeds of up to 1800 rpm.  
 1500 rpm at 50 Hz.  
 1800 rpm at 60 Hz or VSD.

Design pressure, HP side: 28 bar  
 Design pressure, LP side: 18 bar

Sound pressure levels in free field, over reflecting plane and one metre distance from the unit.

All information is subject to change without notice.

Johnson Controls Denmark ApS · Sabroe Factory  
 Christian X's Vej 201 · 8270 Højbjerg · Denmark  
 Phone +45 87 36 70 00 · Fax +45 87 36 70 05  
[www.sabroe.com](http://www.sabroe.com)

